



**JUNE
4-6, 2025**

WEST PALM BEACH, FL

Hilton Palm Beach PBI

www.reentrysummit.com



INFORMATION

The reentry movement is at a crucial point throughout the nation. Over the past few years, significant progress has been achieved in the field nationally, but there are still critical challenges that need to be addressed so that outcomes continue to improve. The Reentry Summit will leave you inspired to educate, advocate, collaborate, and innovate in support of our collective work breaking down barriers for people who are creating a new life after incarceration.

The Reentry Summit—held in beautiful West Palm Beach, Florida—is a perfect venue to share best practices and identify opportunities to collaborate on reentry solutions and programs. Sessions will address a variety of topics including integration of peer specialists, data and technology, housing, employment, creating a reentry system, jail reentry, gender responsiveness, evidence based practices, youth programming, veteran-specific initiatives, and many more related topics.

AVAILABLE FOR DOWNLOAD NOW!

Use the Whova app to find the agenda, event bulletin board, exchange contact info, real time event updates, dinner planning, and presentation documents.



Exhibits on Display at the 2025 Reentry Summit

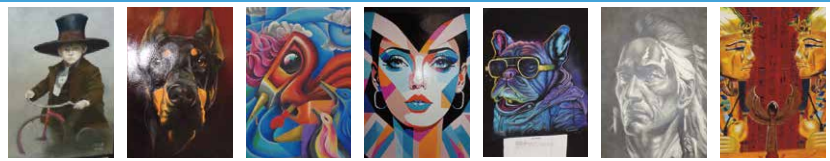
The MORE THAN PROJECT

The More Than Project seeks to spotlight the strength and resilience of formerly incarcerated women.
On display in the Majestic Ballroom



Everglades CI "Artofficial Studio"

In August 2022, a dorm at Everglades Correctional Institute was dedicated to giving men the ability to draw and paint daily.
See their artwork on display in each breakout room



**OFFERING
CEUs!**

FIND YOUR CEU SESSION ON THE *Whova* APP!

Each session that qualifies for CEU will be identified on the Whova app for your convenience.

The Phyllis and Harvey Sandler School of Social Work at Florida Atlantic University is an approved provider of the Florida Board of Clinical Social Work, Marriage and Family Therapy, and Mental Health Counseling, the Florida Board of Psychology, the Florida Office of School Psychology, and the Florida Board of Nursing (BAP #50-6251), as well as the Florida Certification Board (#5350-A) and the Council on Social Work Education (CSWE).

KEYNOTE SPEAKERS



TONY HOFFMAN

From Prison to the Olympics

Thursday, June 5th at 8:00 AM



MARCUS BULLOCK

Founder/CEO | Flikshop

Thursday, June 5th at 12:15 PM



TAMARA SPRINGS

Trainer, Advocate, and Author

Friday, June 6th at 7:45 AM



IAN MANUEL

Author & Motivational Speaker

Friday, June 6th at 12:30 PM

FEATURED SPEAKER



NANCY LA VIGNE

**Former Director
National Institute of Justice**

Friday, June 6th at 12:30 PM



AGENDA

WEDNESDAY

JUNE 4

4:00 PM

Registration Opens | Hotel Lobby

5:00 - 7:00 PM

Welcome Reception | Poolside Tiki Bar

THURSDAY

JUNE 5

7:30 AM

Registration Opens | Hotel Lobby

8:00 - 10:30 AM

Breakfast | Majestic Ballroom

Keynote Address | Tony Hoffman

10:30 - 10:45 AM

Break

10:45 AM - 12:00 PM

Breakout Session 1 | Choose from 5 Sessions

12:00 - 12:15 PM

Break

12:15 - 2:15 PM

Luncheon | Majestic Ballroom

Keynote Address | Marcus Bullock

2:15 - 2:30 PM

Break

2:30 - 3:45 PM

Breakout Session 2 | Choose from 5 Sessions

3:45 - 4:00 PM

Break

4:00 - 5:15 PM

Breakout Session 3 | Choose from 5 Sessions

FRIDAY

JUNE 6

7:30 AM

Registration Opens | Hotel Lobby

7:45 - 9:15 AM

Breakfast | Majestic Ballroom

Keynote Address | Tamara Springs

9:15 - 9:30 AM

Break

9:30 - 10:45 AM

Breakout Session 4 | Choose from 5 Sessions

10:45 - 11:00 AM

Break

11:00 AM - 12:15 PM

Breakout Session 5 | Choose from 5 Sessions

12:15 - 12:30 PM

Break

12:30 - 2:15 PM

Luncheon | Majestic Ballroom

Featured Speaker | Former NIJ Director Nancy La Vigne

Keynote Address | Ian Manuel

WEDNESDAY

Wednesday | 4:00 - 7:00 PM

REGISTRATION OPENS

4:00 - 7:00 PM

Hotel Lobby

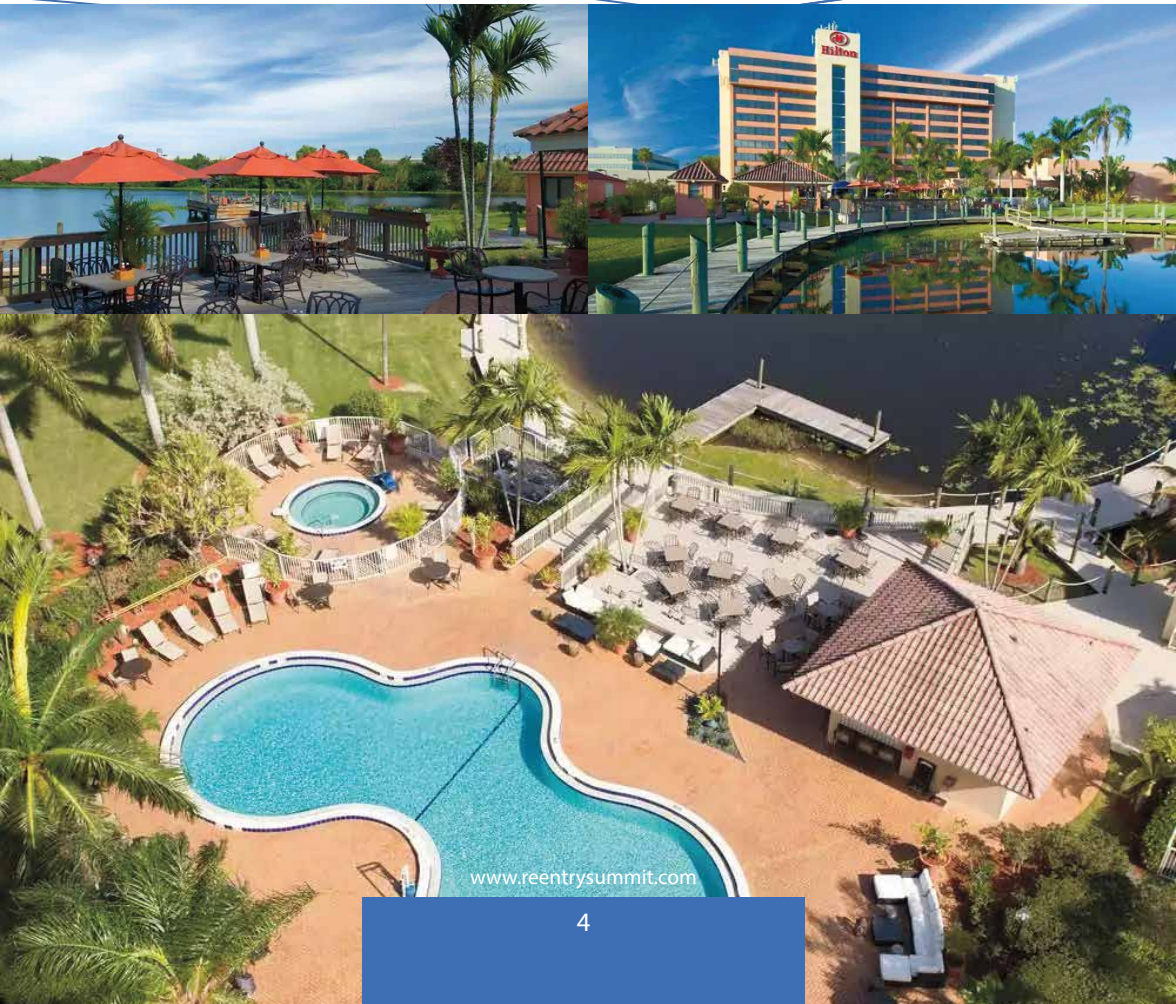
Registration will be open from 4:00 to 7:00 PM. Please register before attending the opening reception. You will receive your welcome packet, name badge, and bag.

WELCOME RECEPTION

5:00 - 7:00 PM

Poolside Tiki Bar

The Welcome Reception will be held at the Poolside Tiki Bar. Please join us for drinks, light bites, and networking.



www.reentrysummit.com

THURSDAY - SESSION 1

Thursday | 10:45 AM - 12:00 PM

THE POWER OF LEADERSHIP IN ENSURING SUCCESSFUL REENTRY*

10:45 AM – 12:00 PM

Room: Salon A

Establishing reentry programming requires not only effective programs, but also strong leadership. This session will explore the strategies, skills, and qualities necessary for effective leadership in challenging the status quo, advocating for better service provision, and creating positive change. This session will also examine how manager leadership styles and staff job satisfaction can impact outcomes of reentry programs across the nation.

Presenters

Derrick D. Schofield | Executive Vice President | The GEO Group

David S. Burch | Divisional Vice President, Continuum of Care and In-Prison Treatment | The GEO Group

Mathew Abraham | Senior Director Treatment and Program Development | The GEO Group

Latoya Lane | Vice President Community Care | The GEO Group

Wendy Dressler | Research Manager | The GEO Group

Learning Objectives:

1. Describe the strategies and skills needed for effective leadership.
2. Learn how leadership styles and staff job satisfaction impact reentry outcomes.

IMPROVING REENTRY PRACTICES THROUGH DATA AND TECHNOLOGY*

10:45 AM – 12:00 PM

Room: Salon B

Although the use of data in reentry is ever present, programs struggle with effectively using data to create change. New approaches and strategies exist that not only incorporate innovative technologies to facilitate greater information sharing across reentry partners, but also to strategically utilize data to revolutionize access to essential services. This session will explore the use of integrated web-based systems to support client participation in their reentry journey and allow organizations to understand where programming changes can be made to improve reentry outcomes. Additionally, attendees will gain a comprehensive understanding of leveraging data for the dual purpose of enhancing reentry programming and securing much needed financial support.

Presenters

Tom Luettkie | Reentry Coordinator | Criminal Justice Coordinating Council

Holly Matthews | Executive Director | Criminal Justice Coordinating Council

Megan Nyce | Justice Research Analyst | RTI International

Andre Peart | Founder and CEO | Untapped Solutions

Learning Objectives:

1. Discover ways to use data to improve reentry outcomes at the client-level.
2. Explore the use of technology as a tool for collaborative client-centered programming.
3. Understand how to leverage data to secure financial support.

BUILDING GOVERNING CAPACITY FOR EMERGING ORGANIZATIONS SERVING SYSTEM-IMPACTED INDIVIDUALS*

10:45 AM – 12:00 PM

Room: Salon C/D

Despite facing challenges that often lead to incarceration—including substance use disorders, mental health issues and antisocial behaviors—many system-impacted people emerge successfully wanting to serve individuals facing similar challenges. Oftentimes, they are not equipped to run a compliant organization that will grow programmatically and financially long-term. Capacity building is particularly vital to strengthen nonprofits, as it equips them with the necessary tools and skills to improve their structure, management, and governance. In this session, attendees will hear from Nonprofits First which trains and certifies nonprofits on board governance, fundraising, and the importance of data collection and program evaluation. Attendees will also learn from a successful case study demonstrating the positive impact of such strategies on reentry programs, highlighting improved outcomes for individuals and communities.

Presenters

Trudy Crowetz | CEO | Nonprofits First

Maribel Roman | Co-founder & Development Consultant | Xcel

Learning Objectives:

1. Understand the importance of nonprofit board governance, fundraising, data collection, and evaluation.
2. Learn how certification and training can lead to programmatic and financial growth.

www.reentrysummit.com

THURSDAY - SESSION 1

Thursday | 10:45 AM - 12:00 PM

USING PROGRAM AND POLICY SOLUTIONS TO HELP PEOPLE WITH SEXUAL OFFENSE CONVICTIONS*

10:45 AM – 12:00 PM

Room: Coconut

People convicted of a sexual offense endure some of the most severe legal penalties, often facing lifelong consequences that extend well into and disrupt the reentry process. Programming solutions allow individuals to navigate their new reality, while advocating for policy change can create a less stigmatized environment for long-term success. This session will examine the impact on programmatic outcomes for veterans with sexual offenses through providing equitable services. Additionally, attendees will hear from those most impacted by local and state restrictions and the vital role they have in reforming policies that lack empirical support.

Presenters

Meghan Mitchell | Assistant Professor | University of North Dakota

Matthew Neary | Owner | Food Group 137

Meredith Powers-Lupo | Healthcare for Reentry Veterans Specialist | US Dept. of Veterans Affairs

Jaclyn Truman | President | TruAlchemi Production Inc.

Learning Objectives:

1. Examine the additional barriers and stigmas people with sexual offense convictions face upon their release.
2. Understand the importance of incorporating the voices of those with lived experience to develop strategies to improve policies that adversely impact the reintegration of those with a sexual offense conviction.

AVOIDING RE-TRAUMATIZATION THROUGH PERSON-CENTERED APPROACHES AND LANGUAGE*

10:45 AM – 12:00 PM

Room: Royal Princess

How people are treated can improve their reentry journey or impede their progress. Evidence has shown that trauma-informed care through embracing, engaging, elevating, and empowering increases resiliency of those returning to the community from incarceration. Further, person-centered language promotes recovery and respects the dignity and worth of all individuals. In this session, attendees will be equipped with tools to enhance trauma-informed practices and learn how the use of language impacts an individual's perception of themselves and their reentry outcomes.

Presenters

Hope Cross | Founder | Cultivating Hope Training and Consulting

Belen Enriquez | Managing Partner | Reentry Innovations

Jonathan Morgan | Dean's Fellow | University of Cincinnati

Learning Objectives:

1. Learn how to implement trauma-informed practices.
2. Understand how the use of language can impact a person's perception of their worth.

*Approved for 1 General CEU for Florida licensed LCSWs, LMFTs, LMHCs, psychologists, school psychologists, and nurses.

THURSDAY - SESSION 2

Thursday | 2:30 PM - 3:45 PM

REENTRY READY: A SIMULATION FOR SUCCESSFUL REINTEGRATION*

2:30 – 3:45 PM

Room: Salon A

While technology plays a vital role in reentry services, reentry providers and practitioners tend to shy away from new, innovative practices. In this session, attendees will participate in a hands-on demonstration of Reentry Ready, an immersive 3D simulation developed by MADE180 to support individuals transitioning from incarceration or recovery. This session will showcase how the simulation equips users with essential life and employment skills—from obtaining IDs and accessing housing to financial literacy and career readiness. Attendees will also learn how the platform integrates AI-driven coaching, customizable environments based on local communities, and practical skill-building scenarios. Discover its impact on reducing recidivism and how it can be adapted for use in reentry programs, workforce development, and youth services nationwide.

Presenters

Jason Dickerson | Founder | MADE180

Vanessa Klein | Director of Reentry Services | The Lord's Place

Eileen Ryan | Case Manager | Palm Beach County Public Defender's Office

Learning Objectives:

1. Understand the importance of reentry simulations in preparing people for release from incarceration.
2. Learn how virtual reentry simulations can be used in reentry services.

UNIQUE SOLUTIONS TO ENHANCING FINANCIAL EMPOWERMENT AND EMPLOYMENT SUCCESS*

2:30 – 3:45 PM

Room: Salon B

People leaving incarceration face major financial hurdles and often lack the resources to achieve economic stability—making poverty both a cause and consequence of incarceration. This session will examine how Just Income's person-centered approach—direct cash assistance designed by and for formerly incarcerated people—is transforming reentry support nationwide. By addressing economic barriers head-on, Just Income has significantly reduced recidivism, improved employment outcomes, and strengthened financial resilience—ultimately stabilizing families and entire communities. Additionally, this session will introduce attendees to the social enterprise model, showing how incorporating traditional reentry programming into the work environment can prepare individuals for unsubsidized employment while providing a source of steady income.

Presenters

Mahlia Lindquist | Executive Director | Ladies Empowerment & Action Program

Kevin Scott | Director of Just Income | Community Spring

Donna Terrano | Director of Community Engagement | Ladies Empowerment & Action Program

Learning Objectives:

1. Understand the financial barriers system-impacted individuals experience and how to overcome them.
2. Learn how social enterprise models can incorporate practical experience alongside reentry programming.

ADDRESSING THE UNIQUE NEEDS OF YOUTH*

2:30 – 3:45 PM

Room: Salon C/D

The unique needs of youth provide a challenge for the traditional cookie cutter models of serving those who are incarcerated. This session will explore the critical role of partnerships between the Palm Beach County Youth Reentry Program and private residential facility provider, Rite of Passage, serving incarcerated youth. Participants will learn how these collaborative efforts provide incarcerated youth with essential skills, resources, and programming to build relationships and prepare youth for successful reintegration into the community. Attendees will also hear from youth who have participated in reentry programming.

Presenters

Kirstie Naom | Director of Operations in Florida | Rite of Passage, Inc.

Randi Taylor | Youth Reentry Program Manager | Palm Beach County Public Safety Department

Learning Objectives:

1. Discuss effective strategies and structuring partnerships that bridge gaps between public and private agencies serving incarcerated youth.
2. Learn about an innovative approach to pre-release case management and reentry programming.
3. Examine methods to engage with community agencies and leverage resources and services existing in your communities.

THURSDAY - SESSION 2

Thursday | 2:30 PM - 3:45 PM

DIVERSE APPROACHES TO REENTRY: MULTIDISCIPLINARY TEAMS AND RURAL COMMUNITIES*

2:30 – 3:45 PM

Room: Coconut

Reentry experiences are as varied as individuals themselves. It is important that communities and programs embrace this diversity and provide holistic and personalized services. Understanding and addressing the unique needs of people and communities can lead to better client-centered outcomes. This session will explore how collaborative, multidisciplinary teams bring together professionals from diverse fields to address complex yet interconnected needs. Additionally, the session will examine how rural communities can embrace their unique characteristics to enhance successful reintegration.

Presenters

Ralph Fretz | Forensic Psychologist | Treasure Coast Forensic Treatment Center

Jonathan Morgan | Dean's Fellow | University of Cincinnati

Jimmie Wilson | Director of Recovery/Reentry Services | Eastern KY Concentrated Employment Program (EKCEP)

Learning Objectives:

1. Explain the composition of multidisciplinary teams and how they can provide holistic support.
2. Learn how rural communities can build upon their strengths to encourage successful reintegration.

THE BENEFITS OF COLLABORATIVE PARTNERSHIPS FOR IMPROVING PRACTICE*

2:30 – 3:45 PM

Room: Royal Princess

Researchers, practitioners, and policymakers are increasingly realizing that they must emerge from their silos and work collaboratively to establish evidence-based practices. Given that these groups approach problem-solving from different yet complementary lenses, such partnerships can have far-reaching impacts on individuals and communities. In this session, attendees will hear from Northwest Ohio's The RIDGE Project and the Criminal Justice Coordinating Council, as they discuss how their partnership has improved program and study implementation and maximized each organization's individual impact. Additionally, the Nebraska Center for Justice Research will discuss theories of desistance and describe how training and technical assistance providers can incorporate such theories into practice to improve outcomes.

Presenters

Tom Luettke | Reentry Coordinator | Criminal Justice Coordinating Council

Katelynn Towne | Research Coordinator | Nebraska Center for Justice Research, University of Nebraska-Omaha

Daniel Williams | Project Director | The RIDGE Project

Learning Objectives:

1. Learn how partnering with evaluators can improve reentry services.
2. Explain how incorporating theories of desistance into practice can improve reentry practice and outcomes.

*Approved for 1 General CEU for Florida licensed LCSWs, LMFTs, LMHCs, psychologists, school psychologists, and nurses.

THURSDAY - SESSION 3

Thursday | 4:00 PM - 5:15 PM

COLLABORATIVE ADDICTION RECOVERY METHODS IN A JAIL SETTING*

4:00 – 5:15 PM

Room: Salon A

Research shows that a significant number of individuals held in jail face substance use challenges, while programming to address addiction is inconsistent in jail settings. Innovative approaches to recovery are necessary due to shorter and more fluid stays in jails than prisons. Attendees will learn from the Chesterfield County Sheriff's Office about the outcomes of a community-based collaboration during incarceration leading to a supportive post-incarceration environment. This session will also feature Lafourche Parish Sheriff's Office community-based approach and the creation of a continuum of care that results in improved recovery outcomes along with other necessary services for a more seamless reentry experience.

Presenters

April Hutchison | Reentry Coordinator | Chesterfield County Sheriff's Office
Laura Stanley | National Certified Peer Support Specialist | Lafourche Parish Sheriff's Office
Chris Waugh | Director of Operations | True Recovery RVA
Latifa Williams | Assistant Director of Programming | Lafourche Parish Sheriff's Office

Learning Objectives:

1. Learn how integrated services in recovery improve reentry outcomes.
2. Discuss the importance of community collaboration in jail recovery.

INNOVATIVE PATHWAYS TO EMPLOYMENT: BRIDGING THE INSIDE TO THE OUTSIDE*

4:00 – 5:15 PM

Room: Salon B

Employment remains a challenge for individuals leaving incarceration with policy and practical barriers standing in their way. Innovative approaches to developing employment and soft skills during incarceration are growing in importance to create a successful transition from inside prisons to outside careers. Attendees will hear from the Nebraska Department of Corrections on the importance of community collaboration combined with specialized programming to build employment success. The Florida Department of Corrections will share how programs combined with competitions during incarceration build skills and confidence that translate to improved employment outcomes in the community. Finally, attendees will learn how public/private entities in Colorado are collaborating to support individuals in the community post-release through trauma-informed, community-based workforce development.

Presenters

John A. Fraundorfer | Program Coordinator | Denver Economic Development & Opportunity
Khalil Halim | Executive Director | Second Chance Center
Trisha Larkin | Vocational Life Skills Program Manager | Nebraska Department of Correctional Services
Kasey Parker | Executive Director | Mental Health Association of Nebraska
Isaiah Sledge | Career & Technical Education Programs Manager | Florida Department of Corrections
Candice Sporhase-White | Deputy Executive Director | Second Chance Center
Derrick Watson | Director | Denver Economic Development & Opportunity
Mike Woolman | Captain | Lincoln (NE) Police Department

Learning Objectives:

1. Learn how community collaboration during incarceration leads to successful employment outcomes.
2. Understand how programming and competitions build employment success.
3. Learn how public/private partnerships provide skills and pathways to employment.

CREDIBLE MESSENGERS: EMPLOYING PEOPLE WITH LIVED EXPERIENCE AS PEERS, NAVIGATORS, AND CASE MANAGERS*

4:00 – 5:15 PM

Room: Salon C/D

The lived experiences of people with previous system involvement can create a powerful and authentic bond with participants seeking to change their lives. These relationships encourage increased engagement in services and greater overall social inclusion, which lowers the risk of recidivism, increases well-being, and leads to stability. This session explores three models for employing people with lived experience—as peer specialists, navigators, and case managers. Attendees will learn how peers use their lived and shared experience to guide recently released individuals during the reentry process, help them connect to positive community alliances, and provide comprehensive and holistic support.

Presenters

Amber Blankenship | Peer Reentry Program Manager | The REACH Initiative
Wendy Dressler | Research Manager, Continuum of Care | The GEO Group, Inc.
William Freeman | Founder & CEO | People of Purpose
Tim Goddard | Associate Professor | Florida International University
Heather Gregory | REACHback Reentry Navigator | The REACH Initiative
Raul Lopez | Post Release Case Manager | The GEO Group, Inc.
Beverly Sharp | Founder & Executive Director | The REACH Initiative
Rashod Wiggins | Post Release Case Manager | The GEO Group, Inc.

Learning Objectives:

1. Explain how people with lived experience can assist people reentering the community.
2. Describe the different models for employing people with lived experiences.

THURSDAY - SESSION 3

Thursday | 4:00 PM - 5:15 PM

THE VALUE OF ENTREPRENEURSHIP: LESSONS LEARNED FROM RESEARCH AND PRACTICE*

4:00 – 5:15 PM

Room: Coconut

System-impacted individuals often find success when they turn skills and ideas into building a business. Forever burdened by the stigma society places on them due to their criminal conviction, this is often a necessary outlet for creating a sustainable living. In this session, attendees will learn what the research says about the challenges and opportunities many system-impacted people encounter when taking an entrepreneurial path, hear from a non-profit organization that hosts an Entrepreneurship Academy and virtual pitch competition, and listen as formerly incarcerated individuals discuss their journey in building successful businesses.

Presenters

Kris Bertelsen | Vice President and Program Director, Addiction Recovery and Prison Education | Huntington Junior College

Christina Biandola | Director of Social Enterprise | Ladies Empowerment & Action Program

Nancy DeNike | Director of Reentry Hub | Ladies Empowerment & Action Program

Jim Flanagan | Student Success Coach | Huntington Junior College

Dan Saull | Reentry Education Consultant

Learning Objectives:

1. Learn how entrepreneurship can be a viable source of income for formerly incarcerated people.
2. Discuss different programs to assist people as they pursue entrepreneurship opportunities.

USING LITERACY, LIBRARIES, AND CREATIVE EXPRESSION IN THE REENTRY PROCESS*

4:00 – 5:15 PM

Room: Royal Princess

Research shows that people incarcerated have lower literacy rates than the general population and that increasing literacy rates and strengthening information access correlates to successful rehabilitation and reentry. This session will examine how literacy efforts can be improved through pre-release reading and writing groups and how communities can embrace the transformative power of creative expression, through spoken word and poetry, to foster a culture of healing, growth, and resilience in reentry. This session will also look at how the use of public libraries not only contributes to literacy efforts but also provides access to valuable services and programs.

Presenters

Wendy W. Hinshaw | Associate Professor of English at Florida Atlantic University | Founding Board Member of Exchange for Change

Anthony McDuffie, Jr. | CEO | Grit Grind and Glory LLC

Doris Mendez-DeMaio | Acreage Branch Manager | Palm Beach County Library System

Learning Objectives:

1. Describe the relationship between literacy rates and successful reentry.
2. Explain methods to improve literacy rates among incarcerated and previously incarcerated people.

*Approved for 1 General CEU for Florida licensed LCSWs, LMFTs, LMHCs, psychologists, school psychologists, and nurses.

FRIDAY - SESSION 4

Friday | 9:30 AM - 10:45 AM

INCREASING SKILLS, EDUCATION, AND ACCESS TO PRE-RELEASE PROGRAMMING*

9:30 – 10:45 AM

Room: Salon A

Research suggests that participating in evidence-based programming while incarcerated promotes successful reintegration upon release to the community, yet pre-release programming largely remains an untapped opportunity. In this session, attendees will hear different approaches to pre-release programming in various correctional settings. Specifically, attendees will learn best practices for developing and managing a boot camp-style GED program within a jail setting. Attendees will also hear about two models being implemented within the Florida Department of Corrections—one that brings together people with lived experience and correctional professionals to create, improve, and enhance existing programs and services and another that uses a community model to teach people how to embrace a prosocial environment.

Presenters

Maggie Agerton | Chief of Substance Use Treatment and Transition Services | Florida Department of Corrections

Nicole Dyson | Founder | The Jesus Infusion

Greg Franzese | Correctional Programs Administrator | Florida Department of Corrections

Elmo Golden | Program Director | Jack Brewer Foundation

Nichole Landrum | Assistant Bureau Chief | Florida Department of Corrections

Derek Saunier | Reentry & Education Program Manager | Hernando County Sheriff's Office Detention Center

Danielle Thomas | PhD Student | University of South Florida

Learning Objectives:

1. Learn how to develop and manage a boot camp-style GED program in a jail setting.
2. Learn how correctional agencies can work with system-impacted people to improve programming.
3. Understand how the pre-release community model increases prosocial outcomes.

BEYOND BARS: EMPOWERING WOMEN'S JOURNEY TO FREEDOM*

9:30 – 10:45 AM

Room: Salon B

Women transitioning from incarceration back into society face distinctive hurdles, from systemic obstacles and societal biases to a scarcity of resources specifically designed for their reintegration. This session will unpack these issues through a comprehensive analysis of the current state of reentry for women. Panelists—all who have triumphed over reentry's challenges—will highlight the strengths of women, while also confronting the weaknesses and gaps of the reentry system. Additionally, this session will spotlight opportunities for systemic reform and introduce innovative, gender-specific initiatives that cater to the unique needs of women. This session aims to be not just a forum for discussion, but a beacon of hope and a call to action for empowerment, support, and systemic transformation.

Presenters

Belen Enriquez | Managing Partner | Reentry Innovations

Judith Negron | Partnership Lead | The Ladies of Hope Ministries

Vanessa Rojas | Project Manager | Rising Scholar

Learning Objectives:

1. Describe the unique needs of women during the reentry process.
2. Explain the strengths, weaknesses, opportunities, and threats to reentry for women.

TRANSFORMING LIVES: TOOLS AND STRATEGIES FOR COGNITIVE CHANGE*

9:30 – 10:45 AM

Room: Salon C/D

Research shows that cognitive change leads to more effective behavioral patterns. Achieving this change requires understanding criminogenic factors and programming needs, which can create a pathway toward a prosocial and positive life. This can be done through using risk-needs assessments, motivational interviewing techniques, and developing prosocial practices. In this session, attendees will hear from Palm Beach County Reentry Services on the practical use of risk-needs assessments and engaging clients in evidence-based programming to change their lives. Attendees will also hear an individual journey of tragedy, transformation, and triumph, based on cognitive behavioral practices.

Presenters

David A. Gethers | CEO | DAG Speaks LLC

Jessica Hidalgo | Manager, Criminal Justice Programs | Palm Beach County Public Safety Department

Learning Objectives:

1. Understand the importance of risk-needs assessments.
2. Learn different techniques for implementing cognitive behavioral practices.

www.reentrysummit.com

FRIDAY - SESSION 4

Friday | 9:30 AM - 10:45 AM

THE ROLE OF FAITH-BASED PROGRAMMING IN REINTEGRATION*

9:30 – 10:45 AM

Room: Coconut

Faith-based programming can have critical impacts at both the individual- and facility-level by teaching resilience, as well as fostering a community of individuals with similar values and beliefs. In this session, attendees will hear an individual story of overcoming, adversity, addiction, and incarceration to move from trauma to triumph through faith. Additionally, attendees will learn about how social support, developed through faith and character-based programming create in-prison communities that extend beyond the prison walls, helping to facilitate successful reintegration.

Presenters

Erin Aboud | Advocate for Recovery and Reentry | Empire Reentry and Recovery Solutions

Richard Glau | Manager of Faith-Based Services | The GEO Group, Inc.

Jessica Rich | Senior Research Analyst | The GEO Group, Inc.

Learning Objectives:

1. Learn about the support of faith-based programming at the individual level.
2. Describe the community created by faith-based programming in facilities.

THE INTERSECTION OF REENTRY AND RESTORATIVE JUSTICE FOR STUDENTS, FAMILIES, AND THE COMMUNITY*

9:30 – 10:45 AM

Room: Royal Princess

Restorative justice practices are those that seek to repair harm to victims and the community, while holding people accountable for their actions. These practices represent a modern approach and should be incorporated into the reentry process. This breakout session will examine how victims, providers, those with lived experience, their families, and the community can have a voice and work together to end mass incarceration, reduce recidivism, and work towards safer communities and incarceration facilities. Additionally, attendees will learn how restorative practices can be used as a transformative approach to discipline in education, moving away from punitive measures towards fostering accountability, empathy, and community. This session highlights how restorative practices prioritize relationship-building, open communication, and conflict resolution by encouraging people to take responsibility for their actions while understanding the impact of their behavior on others.

Presenters

Oswald Newbold | President, Board of Directors | National Association of Reentry Professionals Inc.

G. Alan Williams | Program Planner | School District of Palm Beach County

Learning Objectives:

1. Describe how restorative justice practices differ from traditional punishment approaches.
2. Explain how restorative justice can be used in reentry and school settings.

*Approved for 1 General CEU for Florida licensed LCSWs, LMFTs, LMHCs, psychologists, school psychologists, and nurses.

FRIDAY - SESSION 5

Friday | 11:00 AM - 12:15 PM

FUNDING REENTRY PROGRAMS: OPPORTUNITIES AND PUBLIC OPINION

11:00 AM – 12:15 PM

Room: Salon A

In addition to public grant funding, many efforts to improve outcomes for returned residents have been sustained and expanded through private funding and philanthropic donations, which continue to play a critical role in supporting innovative reentry programs and services nationwide. During this session, attendees will hear from the interim director of a non-profit organization geared towards helping marginalized populations, including the formerly incarcerated. Drawing on the organization's success in securing private donations and philanthropic support, the director will share practical strategies and insights for funding reentry programs through community partnerships and donor engagement. Additionally, attendees will learn about the public's willingness to pay for reentry programs and how this data can be used by state legislators and policy makers to improve reentry outcomes.

Presenters

Kerry Diaz | Interim CEO, The Lord's Place | President/Strategic Advisor, Kerry Diaz Consulting

Daniel Gibson | Vice President, Network Member Success | Purpose Built Communities

Jessica Grosholz | Associate Professor | University of South Florida

Learning Objectives:

1. Learn about leveraging private funding opportunities and philanthropic donations to improve outcomes for returned residents.
2. Explain the public's willingness to pay for reentry programming.

USING COLLABORATION TO BUILD INNOVATIVE REENTRY PROGRAMS FROM THE GROUND UP*

11:00 AM – 12:15 PM

Room: Salon B

Establishing a reentry program in a jurisdiction or implementing an innovative approach to reentry in a community requires the support and collaboration of numerous individuals, agencies, and organizations. This session will examine how a previously incarcerated person has utilized innovative methods to build a community around reentry and establish a reentry program from the ground up. Additionally, attendees will hear about the collaborative development of a community reentry drop-in center that focuses on social determinants of health, low-barrier immediate and flexible access to resources, and building a welcoming environment staffed by people with lived experience.

Presenters

Amy Arrell | Service Director | Open Sky Community Services

Benjamin Brouillette | Operations Director | Open Sky Community Services

Jeremy Collins | Substance Use Counselor | Open Sky Community Services

Kurt Danysh | Executive Director and Reentry Ambassador | Tomorrow's Neighbors

Megan Downing | Clinical Director | Open Sky Community Services

Shane Falwell | House Manager | Tomorrow's Neighbors

Learning Objectives:

1. Learn methods for establishing a reentry community.
2. Explain the benefits of a community reentry drop-in center.

(RE)ESTABLISHING PARENTAL RIGHTS AND RELATIONSHIPS AFTER INCARCERATION

11:00 AM – 12:15 PM

Room: Salon C/D

Incarceration places substantial strain on the relationships between incarcerated parents and their children, and the hurdles associated with reestablishing relationships and parental rights upon release can feel insurmountable. In this session, attendees will hear from previously system-involved parents as they discuss how the Jack Brewer Foundation's 2nd Chance Fatherhood Initiative partners with nonprofits, ministries, and the community to combat these challenges. Additionally, PATH—a community organization that develops peer support communities for parents impacted by the child welfare system—will discuss implications of family separation and reunification, and share information to connect reentering parents with support and resources in reestablishing their parental rights after incarceration.

Presenters

Ivan Blanco | Case Manager | Jack Brewer Foundation

Tiffany Csonka | Parent Leader | Family Engagement Advocacy Council (FEAC); Parent Advocates for Transformation & Healing (PATH)

Christina Romero | Parent Leader | Family Engagement Advocacy Council (FEAC); Parent Advocates for Transformation & Healing (PATH)

Allison Schild | Board Chair, Parent Knowledge Partner | Parent Advocates for Transformation & Healing (PATH)

Learning Objectives:

1. Explain the barriers parents face with reuniting with their children upon release from prison.
2. Discuss methods for overcoming barriers and reestablishing parental rights after incarceration.

www.reentrysummit.com

FRIDAY - SESSION 5

Friday | 11:00 AM - 12:15 PM

THE INTERSECTION OF HOMELESSNESS AND REENTRY*

11:00 AM – 12:15 PM

Room: Coconut

Formerly incarcerated individuals face increasing rates of homelessness and without stable housing are at a higher risk of recidivism. The lack of affordable housing has exacerbated issues of homelessness and housing insecurity, making the importance of merging housing solutions into reentry programming. This session will discuss the role of stigma and how it impacts community members at the intersection of homelessness and reentry. Discussion will include barriers to employment, complications in identifying housing options, and recidivism related to the criminalization of homelessness. The session will also discuss Florida's recent ban on public camping and its implications for reentry programs. Additionally, this session will explore how community collaboration can improve housing and reentry outcomes and break the cycle of homelessness. The session will conclude with a discussion of recommendations for providers.

Presenters

Dani Groton | Associate Professor | Florida Atlantic University
Bryan Joffe | Reentry Intern | The Lord's Place
Vanessa Klein | Director of Reentry Services | The Lord's Place
Cristina Lucier | Vice President of Community Programs | The Lord's Place

Learning Objectives:

1. Identify unique barriers individuals face at the intersection of reentry and housing insecurity.
2. Explore ways to reduce organizational and community stigma related to justice-system involvement and housing insecurity.
3. Understand how community collaboration can improve housing and reentry outcomes.

YOU HAVE A STORY TO TELL

11:00 AM – 12:15 PM

Room: Royal Princess

We all have a story to tell, and the world needs to hear it, whether through the written word or the universal language of music. In this session, published authors and experienced music producers will discuss the ins and outs of how they turned their life experiences and their knowledge into a book or a musical composition. From the writing or songwriting process, to finding a publisher, to marketing a book or distributing music, the experiences of these creators will help burgeoning writers and aspiring musicians alike. Whether you have a story to tell but no idea how to put it on paper, or a melody in your heart waiting to be shared, this session will help you take the next step in producing a successfully published book or a compelling musical piece.

Presenters

David A. Gethers | CEO | DAG Speaks LLC
Tanaine Jenkins | State Organizer with REFORM Alliance | Founder of Second Sentence Awareness
Anthony McDuffie, Jr. | CEO | Grit Grind and Glory LLC
Nikki Morse | Associate Professor of Media Studies | University of Maryland Baltimore County

Learning Objectives:

1. Understand how life experiences can be harnessed to create a successfully published book or a compelling musical piece/album.
2. Describe the writing, publishing, and production processes, along with marketing tips to get a published book or musical work to market and into the hands and ears of readers and listeners.

*Approved for 1 General CEU for Florida licensed LCSWs, LMFTs, LMHCs, psychologists, school psychologists, and nurses.



THANK YOU!

A special thank you to the 2025 Reentry Summit Planning Committee for their leadership, vision, dedication, and continued commitment to advocacy and reentry services in our community and beyond.

CO-CHAIRS

Cassandra Atkin-Plunk | Florida Atlantic University

Jennifer Loyless | Palm Beach County Public Defender's Office

SUMMIT EMCEE

Amlak-I Foley

COMMITTEE MEMBERS

Angela Bess | The School District of Palm Beach County

Yenefer Cerda | Palm Beach County Public Safety Department

Adam Davis | Palm Beach County Library System

Atensia Earp Bowen | NAMI Palm Beach County

Amlak-I Foley | The Village Starts With Us

Derek Gibson | Florida Department of Corrections

Shania Grant | Florida Atlantic University

Arlene Griffiths | Palm Beach County Public Safety Department

Talmedge Hayes | Palm Beach County Graphics

Jessica Hidalgo | Palm Beach County Public Safety Department

Vanessa Klein | The Lord's Place

Nichole Landrum | Florida Department of Corrections

Stephen Plunk | Plunk Designs

Craig Spatara | The GEO Group

Alia Spencer | Palm Beach State College

Shirlon St Amour | Palm Beach County Public Safety Department

Laura Waterman | Gulfstream Goodwill Industries

Maggie Witherow | Restoration Destination

Cathy Wolf | Palm Beach County Public Safety Department

Jessica Younts | Florida Justice Center



FLORIDA ATLANTIC UNIVERSITY

School of Criminology
and Criminal Justice

College of Social Work
and Criminal Justice

inspiring
bold
RESEARCH

to create
positive
CHANGE



EXPLORE OUR SCHOOL

- Inspiring **tomorrow's leaders** to enact positive change
- Championing **equitable outcomes** for all people
- Honoring the **dignity & worth** of every person
- Strengthening **resiliency** in our communities

www.fau.edu/sw-cj/scj

*We Believe in
Second Chances*

*"Start by doing what's necessary,
then do what's possible,
and suddenly you are doing
the impossible."*

- St. Francis of Assisi

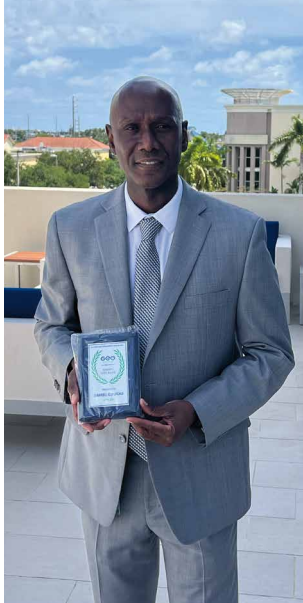


Palm Beach County
Board of County Commissioners
Public Safety Department
Justice Services Division
Reentry Services

**Palm Beach County
Board of County Commissioners**

(561) 355-2370
psd-reentry@pbcgov.org
pbcgov.com/publicsafety/justiceservices

The GEO Group Foundation is proud to be a Social Justice Champion sponsor for the 2025 Palm Beach County's Reentry Summit



The GEO Group Foundation, Inc. ®



THANK YOU TO OUR SPONSORS



FLORIDA ATLANTIC UNIVERSITY

School of Criminology
and Criminal Justice
College of Social Work
and Criminal Justice



Office of the Public Defender
15th Judicial Circuit
Daniel Eisinger - Public Defender



We hope the Reentry Summit leaves you inspired to educate, advocate, collaborate, and innovate in support of our collective work breaking down barriers for people who are creating a new life after incarceration.